
ECHOPANEL® COLLECTION



wi
WOVEN IMAGE®

CONTENTS

ECHOPANEL® COLLECTION	01
ENVIRONMENTAL STORY.....	03
COLOUR STORY.....	05
ECHOPANEL® PALETTE	06
SPECIFICATIONS & PERFORMANCE	07
PRECISION CUT DESIGNS	08
ECHOPANEL® EMPIRE	09
ECHOPANEL® LATITUDE	10
ECHOPANEL® LONGITUDE	11
ECHOPANEL® MERIDIAN	12
PRINT DESIGNS	13
ECHOPANEL® ASTRO	14
ECHOPANEL® FREQUENCY	15
ECHOPANEL® HEX	16
ECHOPANEL® TILT	17
ECHOPANEL® TRAPEZE	18
ECHOPANEL® TRIO	19
PRODUCT PORTFOLIO	20
ARRAY CEILING SOLUTION	21
ECHOPANEL® ELEMENT	22
PENDENTS & SCREENS	23
ACOUSTIC TILES	24
ECHOPANEL® ADAPT	25



ECHOPANEL® COLLECTION

Invented and launched by Woven Image in 2004, EchoPanel® is the original decorative interior panelling solution, with acoustic qualities and eco-innovation at its core.

EchoPanel® reduces and controls reverberated noise in shared environments, making it ideal for use in a variety of commercial interior spaces including workplace, education and hospitality environments.

It is a streamlined product with a fabric-like finish, designed with dematerialisation in mind. Once it has been installed, there is no need to upholster, paint or protect it.

Pioneering the war against single-use plastic, EchoPanel® production uses post-consumer recycled PET bottles to create a superior upcycled product with a vast array of interior applications.

EXTENSIVE PRODUCT RANGE

EchoPanel® offers the largest colour palette on the market. The solid colour remains consistent throughout the thickness of the panel, so you can cut, create and install without the need for edging or capping.

EchoPanel® also boasts an extensive range of inspiring prints and precision cut designs, making it the go-to brand for creative Architects and Interior Designers.

Offered in 3 panel thicknesses; 7mm, 12mm and 24mm. Panel sizes are 2800mm x 1200mm¹, allowing for a seamless floor-to-ceiling application.

APPLICATIONS

EchoPanel® is durable, lightweight, and easy to cut and install, making it ideal for a multitude of wall, ceiling and free-standing interior applications. Frequent installations include:

- Wall panelling: direct fix installation or create an air gap for greater acoustic performance.
- Feature wall tiling².

- Ceiling applications: direct fix, suspended systems or baffles.
- Workstations: its slender, pinnable nature enables it to be used as a double-sided division in a workstation.
- Free-standing partitioning systems²: ideal in the 24mm thickness.
- Hanging pendants²: for dividing a space with privacy and acoustic control.

In-house design for custom printing and precision cutting projects, offers endless possibilities when it comes to creating a bespoke designer look.

ACOUSTIC CONTROL

Controlling reverberated noise is a crucial factor in creating comfortable and productive environments, be it a professional workplace, learning environment, social setting or retail space.

EchoPanel® is optimised for acoustic performance and has been independently tested, in accordance with AS ISO 354: 2006 (R2016). Sound performance indices have been calculated in accordance with AS ISO 11654: 2002 (2016), with NRC and SAA defined by ASTM C423 - 17.

DESIGNED FOR COMMERCIAL INTERIORS

EchoPanel® has undergone many forms of industry testing and complies with some of the world's highest mandatory standards.

Its fire-retardant properties have been developed so that it is an excellent performer in the safety arena. It holds first-class ratings in Australasian and International markets, achieving a Group 1 rating in the 'ISO 9705' full-scale room fire test. EchoPanel® 12mm has also been awarded a valuable 'GB 8624 B1 level', and the internationally recognised 'BS EN 13501.1: Classification B - s1, d0'.

¹ Manufacturing tolerances apply

² Visit wovenimage.com



ENVIRONMENTAL STORY

Dematerialisation, recycling, upcycling and life cycle management were, and still are, at the foundation of EchoPanel® design.

Made from 60% post-consumer waste, sourced from single-use PET bottles, EchoPanel® products are dedicated to the environment. Aside from saving tonnes of plastic waste from our oceans and landfill, the PET is converted into EchoPanel® which boasts a 10-year life expectancy, after which the material is still 100% recyclable.

EchoPanel® is only printed with environmentally sensitive pigment inks to deliver excellent light fastness while remaining low-VOC, non-flammable and non-toxic.

In 2020, we utilised 458 tonnes of recycled PET plastic in our products. By using recycled rather than virgin fibre, we prevented the equivalent of 22.8 million 600ml plastic bottles from entering landfill or our oceans, and stopped 540 tonnes of CO₂eq greenhouse gases from entering the atmosphere.

To date, over 256 million 600ml PET bottles have been diverted from landfill to produce EchoPanel®.

ENVIRONMENTAL CERTIFICATION

EchoPanel® achieves Global GreenTag™ certification (Green Rate Level A) with the maximum Product Health Declaration™: Platinum Health for EchoPanel® plain colours³. It is Red List Free and has published ingredient transparency with Declare.

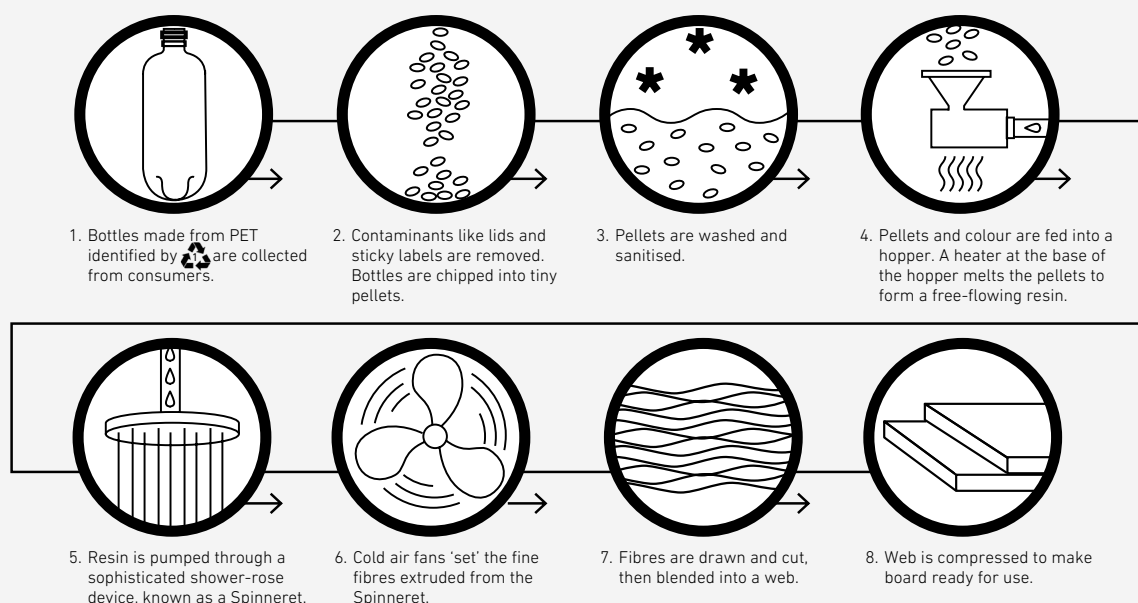
Furthermore, EchoPanel® can secure credits under the following sustainable building rating tools:

- Green Star, as administered by Green Building Council Australia.
- WELL™ Building Standard, International WELL Building Institute.
- Leadership in Energy and Environmental Design (LEED v4.1).

EchoPanel® acoustic quality, along with its extensive colour, design and customisation properties, offers designers the freedom to create stylish, unique and sustainable interior spaces.



MANUFACTURING PROCESS OF ECHOPANEL®



³Visit [wovenimage.com](https://www.wovenimage.com) for further information, or a copy of our full Environmental Product Declaration

COLOUR STORY



EchoPanel® is available in a comprehensive range of neutral, mid tone and vibrant colours. Due to its unique manufacturing process, the colour remains consistent throughout the depth of the panel.

The standard 12mm range includes all 33 colours, with a selection of these colours also available in 7mm and 24mm thickness.

Colours shown are for reference only, please contact your local Woven Image representative for a sample prior to ordering.

ECHOPANEL® PALETTE

500

101

908

454

468

New

447

442

444

402

580

550

542

276

576

274

269

193

New

295

487

384

579

381

108

124

330

349

338

325

365

660

633

551

QUICK REFERENCE GUIDE

Panel Sizes	7mm x 1210mm x 2700mm .28" x 47.67" x 106.3"										12mm x 1200mm x 2800mm .47" x 47.24" x 94.49"										24mm x 1200mm x 2800mm .47" x 47.24" x 94.49"												
	101	108	124	167	193	269	274	276	295	325	330	338	349	365	381	384	402	442	444	447	454	468	487	500	542	550	551	576	579	580	633	660	908
7mm																																	
12mm																																	
24mm																																	

ECHOPANEL® COLLECTION

SPECIFICATIONS

PRODUCT	ECHOPANEL® 7mm	ECHOPANEL® 12mm	ECHOPANEL® 24mm
COMPOSITION	100% PET (60% post-consumer recycled)	100% PET (60% post-consumer recycled)	100% PET (60% post-consumer recycled)
WEIGHT	4.7kg	8kg	10kg
THICKNESS	7mm (+/- 7%)	12mm (+/- 7%)	24mm (+/- 7%)
PANEL DIMENSIONS	2800mm (+/- 10mm) x 1200mm (+/- 5mm)	2800mm (+/- 10mm) x 1200mm (+/- 5mm)	2800mm (+/- 10mm) x 1200mm (+/- 5mm)

PERFORMANCE

COLOUR FASTNESS TO LIGHT	ISO 105 B02: Rating 6 - 7	ISO 105 B02: Rating 6 - 7	ISO 105 B02: Rating 6 - 7
FIRE TEST	ISO 9705: Group 1, AS 1530.3, BS 476: Class 2	ISO 9705: Group 1, AS 1530.3, GB 8624 B1, BS EN 13501.1: Classification B - s1, d0	ISO 9705: Group 1 ASTM E84 Unadhered: Class 2 or B BS EN 13501.1: Classification B - s1, d0 BS EN 45545-2 + A1 Annex C: CIT: 0.00
SOUND ABSORPTION	AS ISO 354: 2006 (R2016) (direct fix results) α_w : 0.20 (H) NRC: 0.25 SAA: 0.24 Class: E	AS ISO 354: 2006 (R2016) (direct fix results) α_w : 0.30 (MH) NRC: 0.45 SAA: 0.43 Class: D	AS ISO 354: 2006 (R2016) (direct fix results) α_w : 0.45 (MH) NRC: 0.65 SAA: 0.63 Class: D
FLEXURAL PROPERTIES		ISO 1209 - 1: 2007 @20mm Deflection Direction 1 = 37.3N, Direction 2 = 39.1N	ISO 1209 - 1: 2007 @20mm Deflection Direction 1 = 39.7N, Direction 2 = 39.8N
VOC EMISSIONS (ECHOPANEL® unprinted)	ASTM D5116: TVOC Emissions Rate: <0.02mg/m ² /hr (7 days), and CDPH Standard Method v1.2: TVOC Emissions Rate: <0.054mg/m ³ ; Formaldehyde Emissions Rate: <2µg/m ³	ASTM D5116: TVOC Emissions Rate: <0.02mg/m ² /hr (7 days), and CDPH Standard Method v1.2: TVOC Emissions Rate: <0.054mg/m ³ ; Formaldehyde Emissions Rate: <2µg/m ³	ASTM D5116: TVOC Emissions Rate: <0.02mg/m ² /hr (7 days), and CDPH Standard Method v1.2: TVOC Emissions Rate: <0.054mg/m ³ ; Formaldehyde Emissions Rate: <2µg/m ³
VOC EMISSIONS (ECHOPANEL® printed)		ASTM D5116: TVOC Emissions Rate: <0.093mg/m ² /hr (7 days)	

PRECISION CUT DESIGNS



PRECISION CUT DESIGNS

ECHO PANEL[®] EMPIREEchoPanel[®] EMPIRE in colourway #468

COLOURS	Full EchoPanel [®] 12mm colour range - see page 6
PANEL DIMENSIONS	2750mm (+/- 2mm) x 1100mm (+/- 2mm)
PANEL THICKNESS	12mm (+/- 7%)

For additional specifications and performance details please visit [wovenimage.com](https://www.wovenimage.com)

PRECISION CUT DESIGNS

ECHOPANEL® LATITUDE



EchoPanel® LATITUDE in colourway #454

COLOURS	Full EchoPanel® 12mm colour range - see page 6
PANEL DIMENSIONS	2750mm (+/- 2mm) x 1100mm (+/- 2mm)
PANEL THICKNESS	12mm (+/- 7%)

For additional specifications and performance details please visit wovenimage.com

PRECISION CUT DESIGNS

ECHOPANEL® LONGITUDE

**COLOURS**

Full EchoPanel® 12mm colour range - see page 6

PANEL DIMENSIONS

2750mm (+/- 2mm) x 1100mm (+/- 2mm)

PANEL THICKNESS

12mm (+/- 7%)

For additional specifications and performance details please visit [wovenimage.com](https://www.wovenimage.com)

PRECISION CUT DESIGNS

ECHOPANEL® MERIDIAN



EchoPanel® MERIDIAN in colourway #384

COLOURS	Full EchoPanel® 12mm colour range - see page 6
PANEL DIMENSIONS	2750mm (+/- 2mm) x 1100mm (+/- 2mm)
PANEL THICKNESS	12mm (+/- 7%)

For additional specifications and performance details please visit wovenimage.com

ECHOPANEL® COLLECTION

PRINT DESIGNS

PRINT DESIGNS

ECHOPANEL® ASTRO



EchoPanel® ASTRO in colourway #548

PANEL DIMENSIONS

2800mm (+/- 10mm) x 1200mm (+/- 5mm)

PANEL THICKNESS

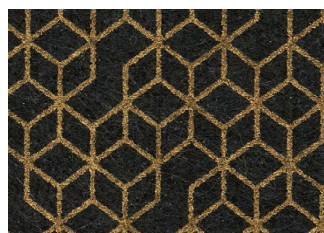
12mm (+/- 7%)

PATTERN REPEAT

Horizontal 107mm, Vertical 173mm - pattern printed on both sides



907



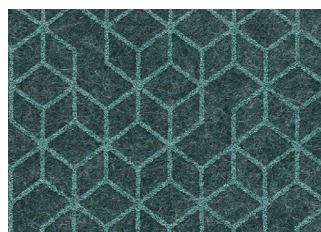
548 (pearlescent ink)



270 (pearlescent ink)



489 (pearlescent ink)



462 (pearlescent ink)

For additional specifications and performance details please visit wovenimage.com

PRINT DESIGNS

ECHO PANEL[®] FREQUENCY

PANEL DIMENSIONS

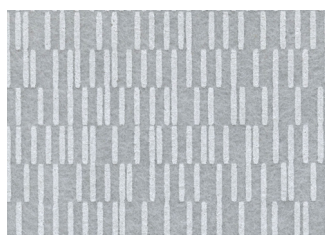
2800mm (+/- 10mm) x 1200mm (+/- 5mm)

PANEL THICKNESS

12mm (+/- 7%)

PATTERN REPEAT

Horizontal 300mm, Vertical 320mm (half drop) - pattern printed on both sides



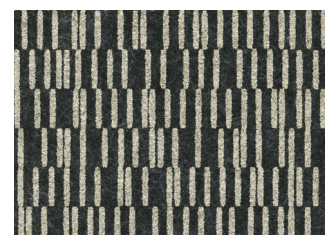
100



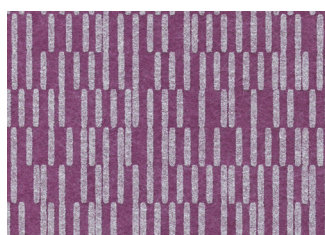
101 (pearlescent ink)



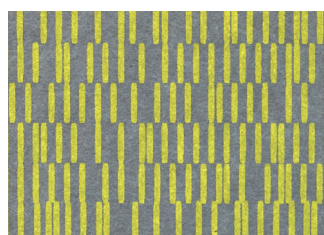
641 (pearlescent ink)



544 (pearlescent ink)



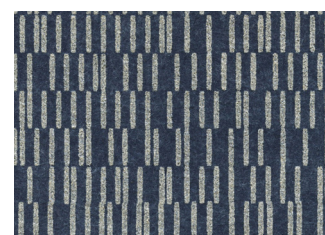
213 (pearlescent ink)



612



577



301 (pearlescent ink)

For additional specifications and performance details please visit wovenimage.com

PRINT DESIGNS

ECHO PANEL[®] HEX

PANEL DIMENSIONS

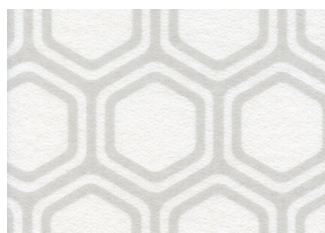
2800mm (+/- 10mm) x 1200mm (+/- 5mm)

PANEL THICKNESS

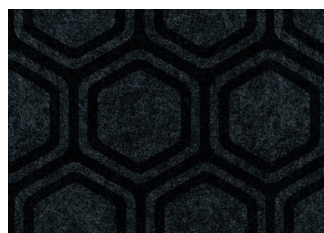
12mm (+/- 7%)

PATTERN REPEAT

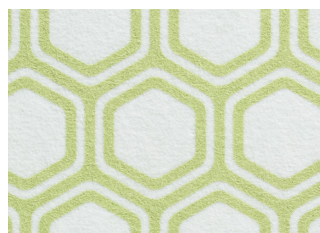
Horizontal 74mm, Vertical 130mm - pattern printed on both sides



444



542



111

For additional specifications and performance details please visit wovenimage.com

PRINT DESIGNS

ECHO PANEL® TILT



PANEL DIMENSIONS

2800mm (+/- 10mm) x 1200mm (+/- 5mm)

PANEL THICKNESS

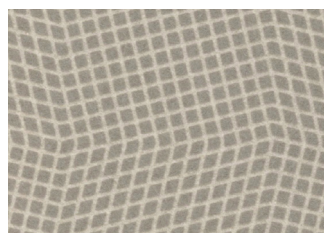
12mm (+/- 7%)

PATTERN REPEAT

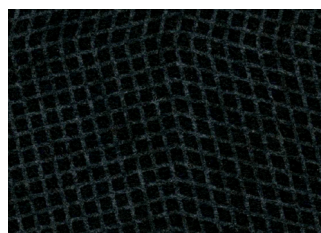
Horizontal 128mm, Vertical 128mm - pattern printed on both sides



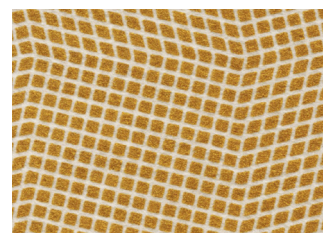
501



402



545



131 (pearlescent ink)

For additional specifications and performance details please visit wovenimage.com

PRINT DESIGNS

ECHOPANEL® TRAPEZE



PANEL DIMENSIONS

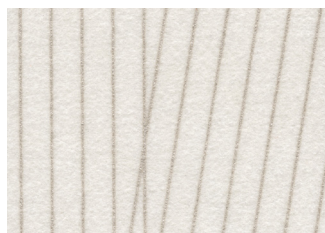
2800mm (+/- 10mm) x 1200mm (+/- 5mm)

PANEL THICKNESS

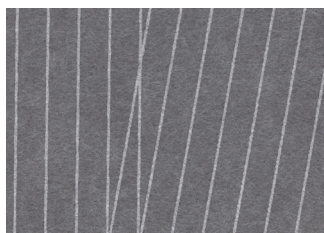
12mm (+/- 7%)

PATTERN REPEAT

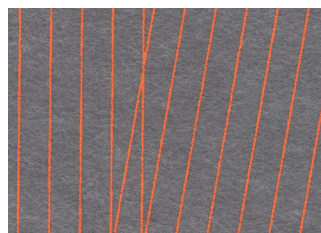
Horizontal 400mm, Vertical 590mm - pattern printed on both sides



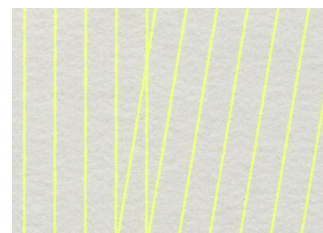
454 (pearlescent ink)



443



150 (fluorescent)



107 (fluorescent)

For additional specifications and performance details please visit wovenimage.com

PRINT DESIGNS

ECHOPANEL® TRIO



PANEL DIMENSIONS

2800mm (+/- 10mm) x 1200mm (+/- 5mm)

PANEL THICKNESS

12mm (+/- 7%)

PATTERN REPEAT

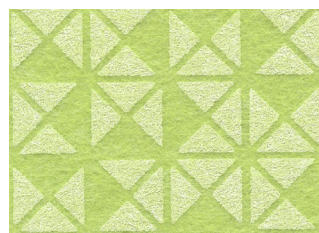
Horizontal 65mm, Vertical 65mm - pattern printed on both sides



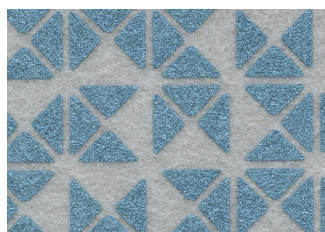
500



100



381



315 (pearlescent ink)



365 (pearlescent ink)

For additional specifications and performance details please visit wovenimage.com

PRODUCT PORTFOLIO



ARRAY CEILING SOLUTION



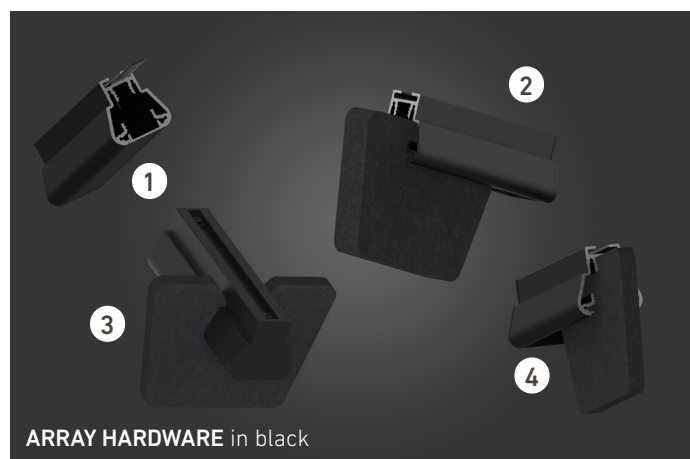
ARRAY in colourways #500, #454, #908 & #468

Array is a design-led, fully scalable and easy to install acoustic ceiling solution from Woven Image. Choose from 8 beautifully crafted baffle designs, made using EchoPanel® in both 12mm and 24mm thicknesses. With a streamlined aluminum extrusion, Array allows for simple onsite tailoring and adjustment.

Delivering high acoustic performance ratings, Array helps to control reverberated noise in shared commercial spaces, including workplace, education and hospitality environments.



ARRAY HARDWARE in white



ARRAY HARDWARE in black

KEY

- 1 Hardware with inserted snap cover
- 2 24mm parallel installation
- 3 Standard snap fit for 12mm or 24mm perpendicular installation
- 4 12mm parallel installation

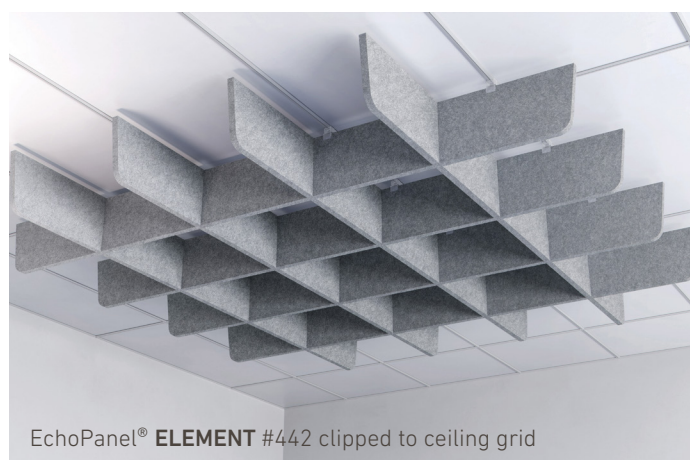
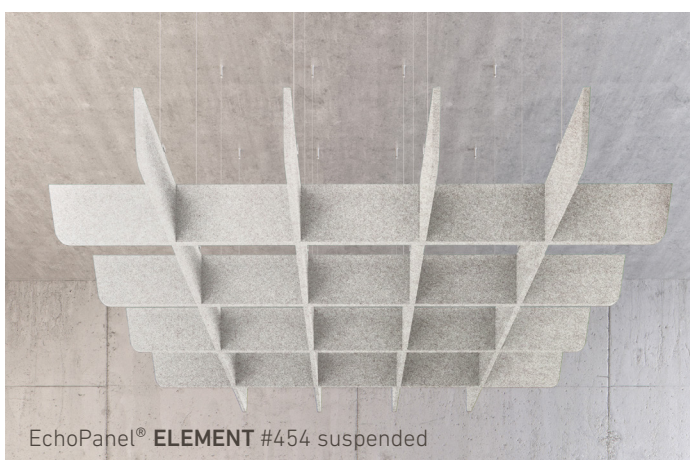
For additional specifications and performance details please visit [wovenimage.com](https://www.wovenimage.com)

ECHOPANEL® ELEMENT



EchoPanel® Element is a practical, design-led acoustic ceiling solution. It is easy to install, fixing directly to a ceiling or attaching to a ceiling grid using cleverly designed translucent clips for a completely seamless finish.

There is also the option to order a suspension kit solution, allowing EchoPanel® Element to appear to float, creating a design focus, as well as providing an acoustic baffle. There are 3 different colourways available, all chosen to enhance a variety of contemporary commercial interior settings.



For additional specifications and performance details please visit [wovenimage.com](https://www.wovenimage.com)

PENDENTS & SCREENS



EchoPanel® **TANDEM** pendants in colourway #551

EchoPanel® Space Dividers allow designers to stylishly define areas within open-plan spaces, whilst delivering privacy and acoustic control. The range includes ceiling-suspended pendants and free-standing space dividers.



EchoPanel® **PALING** space divider in colourway #542 with copper and chrome joiners

For additional specifications and performance details please visit wovenimage.com

ACOUSTIC TILES



ASCENT tiles in colourway #269

Acoustic Tiles are the perfect product range for designers looking to achieve acoustic function with a quality design. The portfolio boasts an extensive range of solid colours and pattern-matched printed, cut and 3D formed tiles, providing an endless stream of design configurations.



BALANCE 1340 tiles in colourway #365

For additional specifications and performance details please visit wovenimage.com

ECHO PANEL® COLLECTION

ECHO PANEL® ADAPT



EchoPanel® **ADAPT CLASSIC** screen
in colourway #454 with cream
desk clamps

EchoPanel® Adapt workstation screens are available in two different sizes (Adapt Classic: 1790mm x 780mm and Adapt Social: 1790mm x 544mm). They are pinnable, provide privacy and assist in reducing reverberated noise in work spaces. Choose from 3 colours in the EchoPanel® 24mm range.

They are easy to install using our unique desk clamps which are available in charcoal (#542) and cream (#908) colourways.



EchoPanel® **ADAPT SOCIAL** in colourway #542 with charcoal desk clamps

For additional specifications and performance details please visit wovenimage.com

