

Rockfon Facett Soffit Panel



Rockfon Facett is a direct-fix thermal, acoustic and non-combustible fire-safe solution for concrete soffits to regulate conditioned-spaces above. Rockfon 60mm Panels have a thermal R-value of 1.71 (material) and an NRC 1.00, Rockfon Facett is truly best-in-class for its specific application. Rockfon Facett requires no drilling, pinning or shot-fired fasteners that can interfere with pre and post-tensioned concrete. The use of ultra-strong adhesive bonding eliminates thermal-bridging. Further, panels are resilient to moisture, are non-hygroscopic and there is no taping of joints which can often be prone to failure. With an attractive white-grey surface, Rockfon Facett is the ideal solution where insulation is exposed and highly visible.

Physical Description

- Stone wool panel
- Visible side: white-grey mineral fleece
- Rear side: back fleece

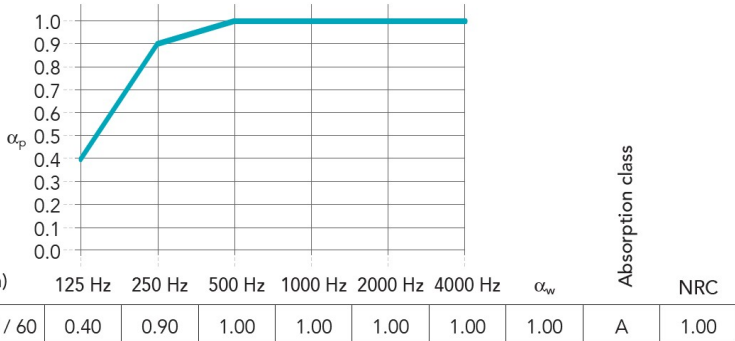
Application Areas

- Carpark soffits
- High-acoustic treatments for noise corridors
- Industrial applications
- Insulation for retail stores without ceilings

Acoustic Properties



NRC: 1.00 to ISO354 (Facett 60mm)



What is Rockfon?

All Rockfon products comprise a non-combustible stone wool core that is non-hygroscopic and provides no sustenance for mould and microbes. The use of a backing fleece improves product performance and resilience, ensuring panels remain free from fractures and site-damage where panels are subject to frequent demounting. Products will maintain dimensional stability in environments with fluctuating humidity up to RH100. All Rockfon Materials are warranted against manufacturing defects for 15-Years and have a declared service life of not less than 50-Years



Material Properties

Rockfon Facett



Stone wool is non-hygroscopic and provides no sustenance for microbes



Up to RH100 - No visible deflection to EN 13964
No on-site acclimatisation required



Vacuum and damp cloth clean



Light Reflectance 67% to ISO 7724-2



44% Recycled Content to ISO-14021. Recyclable at end-of-life



Non-combustible to AS1530.1
Group 1 to AS5637.1:2015



LEED v4.0 Certification. Low emission



Thermal R-Value: Refer to Below Table



Up to 15-years warranty against manufacturing faults
Refer to warranty and installation guidelines

Example Specification Wording

INS-01 Insulation Panel

Material: Rockfon Facett Soffit Panel

Format: **1200 x 600 x 60mm Direct Fix Panel with B edge**

Finish: White-grey non-perforated cleanable fleece to front, buff rear fleece

Sound Absorption: **NRC 1.00 to ISO 354**

Light Reflectance: 67% to ISO 7724-2

Thermal R-value: **1.71m2/KW**

Moisture: RH100 sag-resistant non-hygroscopic antimicrobial stone wool core

Installation: Abut panels tightly. Glue fix to soffit as per manufacturers instructions

Fire: Non-Combustible to AS1530.1 & Group 1 to AS5637.1:2015

Warranty: Up to 15-Years against manufacturing defects and visible sag

Lead Time: Allow 14-weeks for project quantities

Sustainability: LEED v4.0 Certification

Example Images



Format

Edge Detail*	Tile Format (mm)	Approximate Weight (kg/m ²)	NRC	Material Thermal R-Value (m ² /KW)	System Description
	1200 x 600 x 50*	5.0	0.95	1.42	Bevelled edge for direct glue fix
	1200 x 600 x 60	5.9	1.00	1.71	
	1200 x 600 x 80*	7.3	0.95	2.28	
	1200 x 600 x 100*	9.0	0.95	2.85	

Supplied by



Grayking Interior Supply Pty Ltd

NSW

65A Stephen Road
Botany New South Wales 2019

(02) 9666 6688
sales@grayking.com.au

QLD

(07) 3267 6222
sales@grayking.com.au

www.grayking.com.au

Official Australian Partner to:



Rockfon[®]

Installation Guide

Description–Rockfon System B Installation

Rockfon System B installation provides a solution where acoustic treatments are required, but ceiling heights remain critical. Good absorption levels remain achievable even without a rear cavity thanks to the high acoustic-absorption properties of Rockfon Panels.

Rockfon Panels can be installed in horizontal, vertical or sloping applications providing that these guidelines are followed with due care.

Supported Adhesives

Bostik Simpson ISR 70-05 AP construction adhesive has been tested with Rockfon Panels in Australia and approved for *Rockfon System B Installation* to bond Rockfon panels onto concrete, wood or metal for ceiling and wall applications.

The use of approved adhesives in accordance with these guidelines will ensure a long-lasting end result that can be warranted.

Procurement

Please contact your local Bostik distributor for supply of *Bostik Simpson ISR 70-05 AP* or call Bostik on 1800 Bostik (1800 267 845)

Product Codes:

- 600ml Sausage (White): 30600971
- 600ml Sausage (Grey): 30600972

Note: 12 Units per carton for each



Before the Application

Substrate Preparation

Ideally, the substrate should be clean, level as well as dust and moisture-free. Any paint or plaster layers must have durable adhesion strength determined by others.

Scrape the substrate free of debris or construction overflow where possible.

If the substrate is uneven or shows rough irregularities of more than 5mm, please contact the supplier for advice.

The quality of the result is linked to the quality and evenness of the substrate where a ceiling-like finish is required.

Pre-treatment

The substrate does not need to be absolutely dry (slightly humid substrates without water are allowed). For very porous and/or absorbent substrates, a primer is recommended. If in doubt, consult the adhesive supplier.

To test the substrate, apply 25-30mm ball of adhesive directly to the soffit and allow to cure. If the sample snaps when pulled, the substrate is considered suitable.

Grease on any surface must be avoided.

Installation Guide (cont.)

Application

The adhesive can be applied with a standard caulking gun, however the **use of an electric caulking gun is strongly recommended** for even and consistent application of the adhesive.

The nozzle must have a 'V' cut in the tip to ensure that the trailing edge forms a triangular shaped bead of adhesive that is consistently applied according to the adhesive patterns provided in this guideline.

It is recommended that the **bead of adhesive is approximately 9mm x 9mm**. The goal of this method is that the adhesive 'interlocks' with the rear scrim of the panel. Sufficient adhesive and even pressure is essential for this to occur.

The caulking gun should be held to ensure the nozzle is closer to being perpendicular rather than shallow-angled to the panel.

Note: Some smooth matt surfaces are directional. Take note of any directional arrows printed on the rear of the panel to ensure a consistent aesthetic finish. Regular visual inspection is advisable.

The panels should be installed within 15 minutes of applying the adhesive.

Press the panel firmly and fully onto the substrate with a foam-padded plasterer's trowel or blank-surface sanding pad. **Hand pressure alone is insufficient.**

The panel bonds directly to the substrate without the need to support it. Moving panels slightly for correct positioning is still possible during the first few minutes.

Note: In the event of panel adhesion failure, it is easily determined if the correct application advice has been followed.

Consumption Rates (Guideline Only)

Rockfon Facett:

3 to 3.5 panels per 600ml sausage for panel thickness 50 to 60mm
2.5 to 3 panels per 600ml sausage for panel thickness 80 to 100 mm

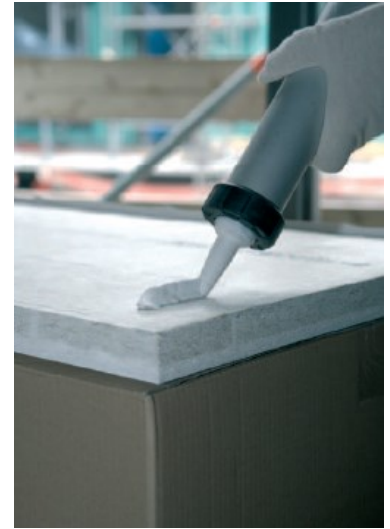
Note: For large projects, specific flow rate calculations should be considered

Strength and curing

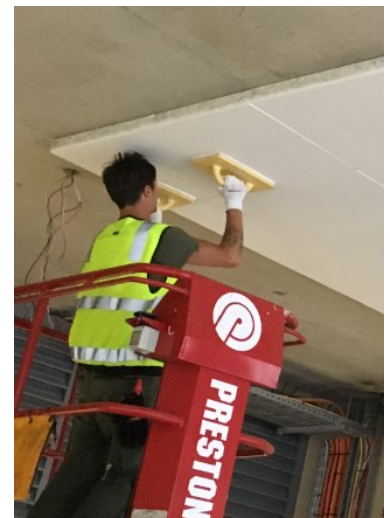
Panels should be installed to the substrate within 15 minutes after application of the adhesive. The initial adhesive strength (green strength) is more than enough to keep the panel immediately in place.

In laboratory testing, the initial strength of the adhesive was determined to be greater than 30 kg/m² (which is 3 times any maximum panel weight) when applied correctly.

The nominated adhesive curing time is influenced by air humidity levels. The curing process is in fact faster under slightly elevated humidity conditions, so humidity should never be an issue. Final bonding strength of the adhesive is reached after 48 hours. The adhesive is permanent, strong and flexible.



A V-shaped adhesive bead ensures penetration into the panel scrim



Using foam pads ensures reliable adhesion to the substrate



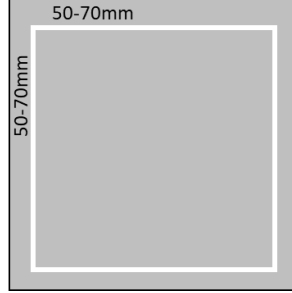
B-edge panels create a monolithic aesthetic

Installation Guide (cont.)

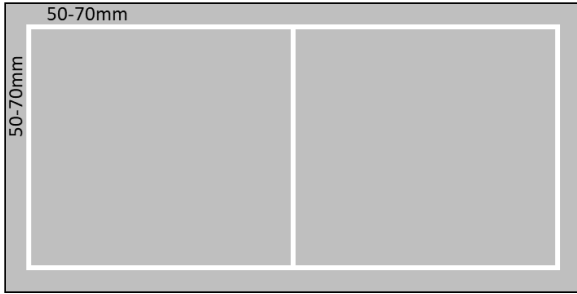
Adhesive Patterns

The following adhesive patterns form the minimum recommendation for 1200x600 and 600x600mm panels.

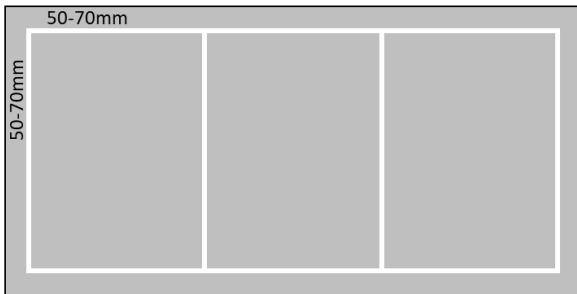
Rockfon Sonar / Sonar Activity 20mm – 40mm



Rockfon Facett 50mm – 60mm



Rockfon Facett 80mm – 100mm



Conclusion

- A high level of finish is achievable when these guideline are followed.
- Where the installing contractor is provided an appropriately level substrate, installation is quick and effortless relative to other soffit solutions.
- Installation is silent, and requires no explosive fastening systems meaning installation crews and ancillary trades benefit from no auditory complications.
- Please refer to our SDS for more information.

Supplied by



Grayking Interior Supply Pty Ltd

NSW

📍 65A Stephen Road
Botany New South Wales 2019

☎ (02) 9666 6688
✉ sales@grayking.com.au

QLD

☎ (07) 3267 6222
✉ sales@grayking.com.au

www.grayking.com.au

